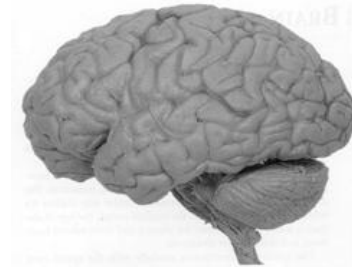
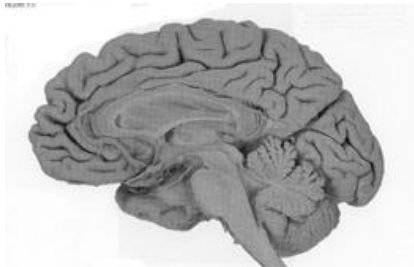


DATE _____

NAME _____

ACTIVITY 3: Mind Reader (Ross, 2003)

1. What two techniques have been used to measure brain activity while telling “falsehoods”?
2. What two areas of the brain were more active during lying than during truth telling? (Indicate the anatomical locations below.)



3. How far do you think we are from detecting lying using brain scanning? Are the researchers making interpretations beyond their results?
4. Given the problems using EEG and fMRI, what needs to be verified before we jump to such conclusions?
5. What concerns might you have about being “able” to tell what people are thinking?
– Relate this back to the assumptions made by craniologists.